



Viewings

Viewings by arrangement only.
Call 0114 2666300 to make an appointment.

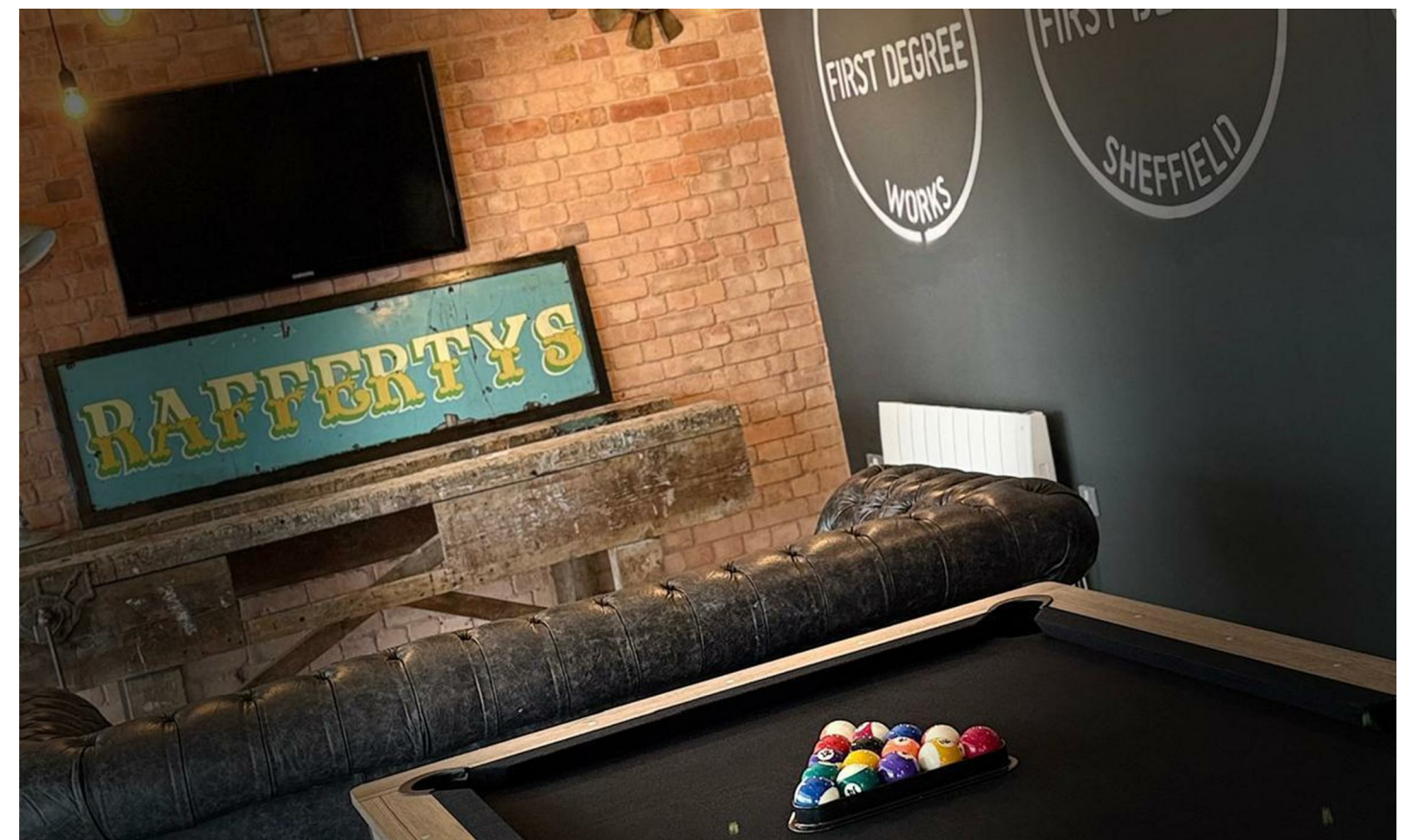
Vendors Comments

Add text here

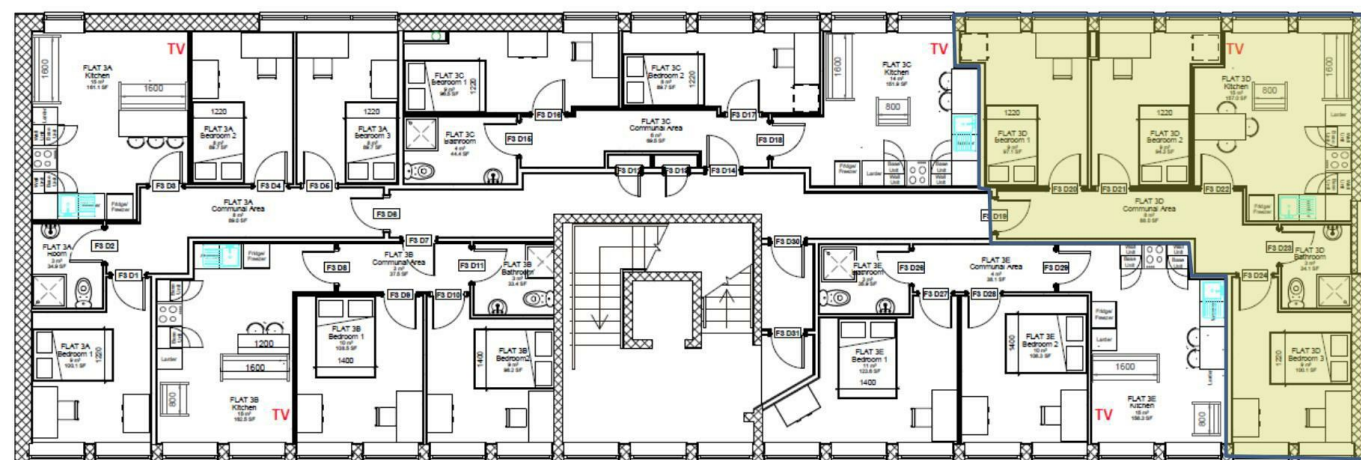
Energy Efficiency Rating		Current	Potential
Very energy efficient - lower running costs			
(92 plus) A			
(81-91) B			
(69-80) C		71	80
(55-68) D			
(39-54) E			
(21-38) F			
(1-20) G			
Not energy efficient - higher running costs			
England & Wales		EU Directive 2002/91/EC	

JC SALES & LETTINGS

Tel: 0114 483 0038
E-mail: sales@jc-salesandlettings.com
Website: www.jc-salesandlettings.com



Apartment 16, 3rd Floor, Forge House, 17 Arundel Gate, Sheffield, S1 2PN



1 3rd FLOOR
1:50

Apartment 16, Forge House Arundel Gate, Sheffield, S1 2PN

£70 Per week

- Available for 3 students at £70 per person per week
- Resident only study basement and communal lounge with pool table
- Wi-Fi 1000mbps
- SHU gym 5 minutes' walk away
- Convenience store on-site (Lidl 2 minute walk away)
- Bills included option available at £100 per person per week
- Secure coded entrance system & CCTV
- Washer / dryer in each apartment
- "On-campus" for Sheffield Hallam University
- Early viewing highly recommended

Apartment 16, Forge House Arundel Gate, Sheffield S1



*** STUDENT SHARERS ONLY *** £70pppw *** BILLS INCLUDED OPTION AVAILABLE AT £100pppw (Includes energy, water, internet and TV licence)

CITY CENTRE LOCATION with ON-SITE STUDY BASEMENT, COMMUNAL LOUNGE with POOL TABLE and MOVIE AREA.

*** AVAILABLE FOR A GROUP OF 3 STUDENT SHARERS ***

Immaculately presented, high specification apartments situated in a prime "ON CAMPUS" LOCATION.

Benefitting from communal, on-site facilities included in the rent at no extra charge and situated close to an abundance of local amenities.

Only a few apartments remain for the next academic year, so an early viewing is highly recommended to avoid disappointment!
EPC Grade B



Council Tax Band: A

